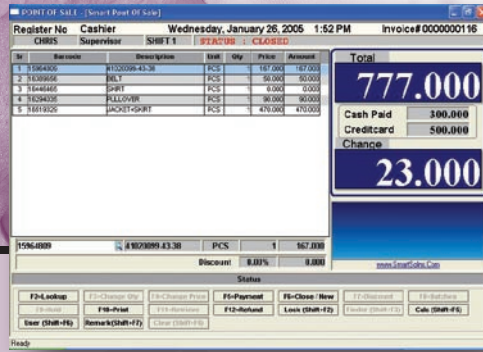




# SMART POINT-OF-SALE



Smart Solutions  
الحلول الذكية  
integrated business software  
أجهزة الأعمال المتكاملة

Point-of-Sale (POS) system is designed for companies doing retail business such as Super-markets, Pharmacies, and other Retail-outlets which involve a high turnover in sales and the key to the success lies in processing customers as quickly as possible. Our unique combination of excellent hardware and software deliver a state-of-art solution to the client. Some of the features of our system are listed below:

## FEATURES

**ON-LINE PROCESSING:** Smart POS attaches directly to the Main inventory system. This allows the system to access the most up-to-date inventory status such as new products purchased during the day and the quantity on hand of each product.

**FAST SCANNING:** The system can use a variety of scanners depending on the clients requirements. For high volume of transactions, a flat-bed scanner can be attached. When the transaction volume does not justify a flat-bed scanner, a hand-held scanner can also be used.

**EASY-TO-USE:** The system is very easy to use with drop-down menus, and easy to understand messages and help. Keyboard commands are kept consistent throughout the system. For example, the key "Ins" means "Add a New Record". This key is never used for any other option. This makes learning the program very easy. Even a non-computer user can get the program up and running within a day or two.

**COMPREHENSIVE SECURITY:** The system is equipped with a comprehensive security system. The management can restrict the user from sensitive information by assigning each user with a unique password and what programs can be executed by each user. A user cannot execute a program if he does not have the necessary authorization.

**MULTI-USER SUPPORT:** The system can be placed on a network to allow multiple users to access the data simultaneously. All network capabilities are built inside the system. This means that the system can grow along with your company. As the needs of the organisation grow, you simply add an additional computer to the network and the same system will run on it.

**DATA-MINING SOLUTIONS:** Smart POS keeps track of each item sold, plus additional information such as the date and time the item was sold. This presents management with vast amount of data

to sift and analyse. With our Data-mining add-on tools, management can now study the buying patterns of their customers. Analysis can be made as to which days have the highest sales, what time do customers usually come to the store and what sort of items are being purchased at a particular time of the day. With information like this, management is in a powerful position to take decisive action and plan ahead.

Point-of-Sale System is part of our **"TOTAL SOLUTION PACKAGE"** which includes General Ledger, Accounts Receivable & Payable, Asset Management, Inventory & Order Processing etc. All these systems are tightly integrated and easily share data with each other. Such integration allows the user to enter data just once. Once the data is validated, the system automatically updates all the relevant files. This results in error-free data in the system since the source of any problem can be easily located at its source.

## KEY FEATURES

**READS AND PRINTS ANY BAR-CODES:** Smart POS can read any industry bar-codes which means you can directly use the manufacturer specified bar-codes. This will reduce data-entry work and eliminate any errors which would otherwise occur when item codes are entered manually. For those items which do not have manufacture bar-codes, the System offers a simple solution of printing bar codes from within the system. These bar codes can be printed on a standard laser printer and attached to the product.

**HANDLES MULTIPLE-SHIFTS:** For those companies having multiple shifts, the system keeps track of cash collected from each shift. This makes it easier for management to account for Cash from multiple cashiers who worked during the day. Data of each shift is kept separately for auditing purpose.

**INTERNAL AUDIT OF SLIPS:** For each slip printed, an internal audit file is kept tracking every slip printed by the cashier. This avoids any misuse of the system by employees.

**HANDLES CREDIT CARDS:** The system can accept credit card payments. At the end of the day, the system will generate summarized statement for each credit card showing the amount to be collected from each credit card agency and the commission to be paid.

And much more...